
Product Description

The Eago 1B is high efficiency control unit for 800W (rated) motor and 1.2KW (Peak)

It supports several ADCs and I/O command inputs for wide range of applications. Multi-regeneration is available. Service and health diagnosis tool reduce the efforts of maintenance.

Utilities

- Light electric (and cargo) vehicle
- Personal transportation carrier

Features

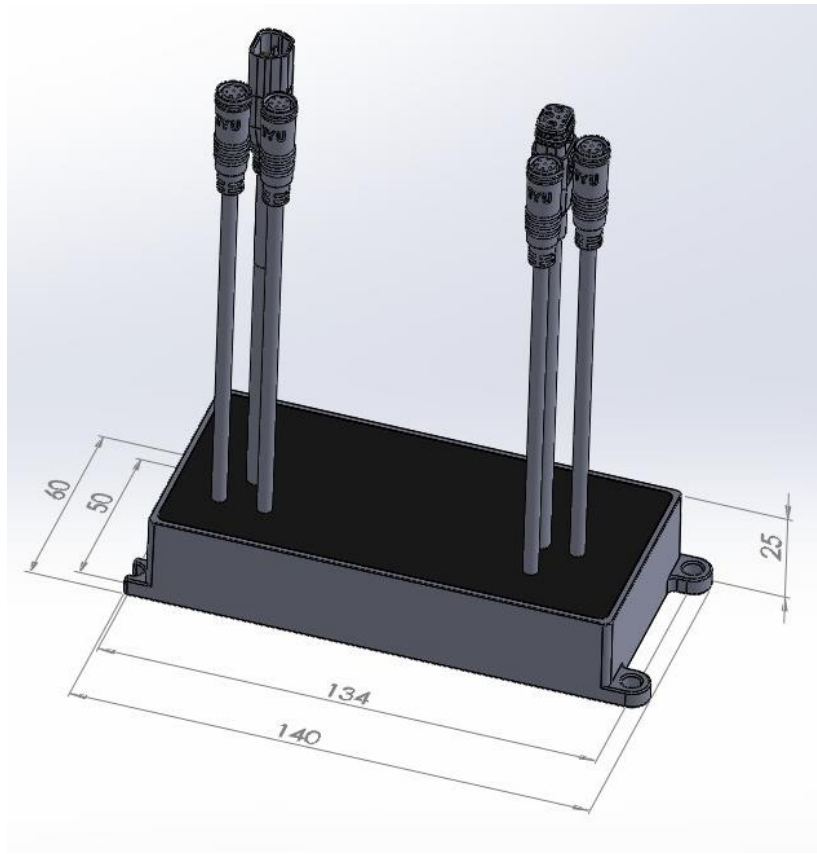
- Motor phase current up to 70A (rated) / 90A (peak)
- 800W rated
- CAN Bus
- Field Oriented Control (FOC) for 97% efficiency and silent motor drive
- Multiple analog and digital input and output for extra application
- Intelligent motor-phase matching
- Regeneration
- Error protection and functional safety
- ISO 13849-1/-2 certificate report
- UL 2849 certificate

Interfaces

Pin Out Table				
Group	Item #	Function	Description	Specification and rating
Motor (A)	1	+5V / +12V	5V for hall	30mA max
	2	Hall-U		0V/5V
	3	Hall-V		0V/5V
	4	Hall-W		0V/5V
	5	NTC or Digital input 1	NTC/Motor speed	Analog input 1
	6	GND		30mA max
	7	Torque		Analog input 2
Battery (B)	8	CAN H		
	9	CAN L		
Display (B)	10	+5V		
	11	GND	Torque	
	12	CAN H	Throttle	
	13	CAN L		30mA max
	14	Wake up		
	15	+36V (DC Bus)		Bypass
Torque (A)	16	+5V		
	17	GND		
	18	Torque		Analog input 3
	19	S1	Digital input 2	
	20	S2	Digital input 3	
	21	+12V		
Front Light (B)	22	+12V switchable		PWM; 2.5A max
	23	GND		
Rear Light (A)	24	+12V switchable		PWM; 200mA max
	25	GND		
Throttle (B)	26	+5V		
	27	GND		
	28	Throttle		Analog input 4
Brake (B)	29	Brake		Digital input 4
	30	GND		

Note: The table does not include the wires for high current.

Dimensions



Note: Wire harness is only for reference and normally would be customized.